



TECHNOLOGY FOR SOLID WASTE EVALUATION

CHALLENGE

Municipal solid waste storage has negative environment impacts.

- **Easthetic – noncontrolled municipal solid waste.**
- **Ecological**
 - **Methane, (CH₄) , which is released from the solid waste storage, it is 20x worse for the athmosphere then carbone dioxide (CO₂).**
 - **Threat to the earth.**

Kyoto protocol - until 2020 20% energy production from renewable sources.



MISSION STATEMENT

We provide:

- efficient and cost-effective, environmentally friendly waste management and alternative energy production

We delivery

- a thermal degradation system that completely sanitizes waste and harvests all valuable elements from waste and biomass at the highest efficiency

We destroy

- toxic components at ultra-high temperatures, without any harmful emissions to the environment, using state of the art technology

We recover

- And utilize the energy content of waste and biomass

To safeguard

- Human health and the environment



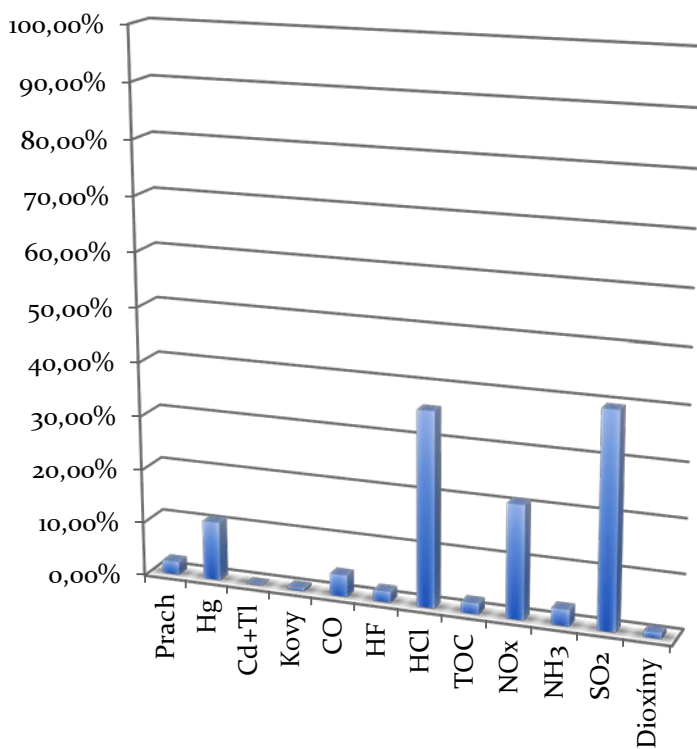
ATT

ATT advanced thermal treatment technologies

Pyrolysis is thermochemical decomposition of organic material with carbon content in their particles. During the pyrolysis process is lack of oxygen. The products of pyrolysis are only synthesis gas and a carbonius solid residue.

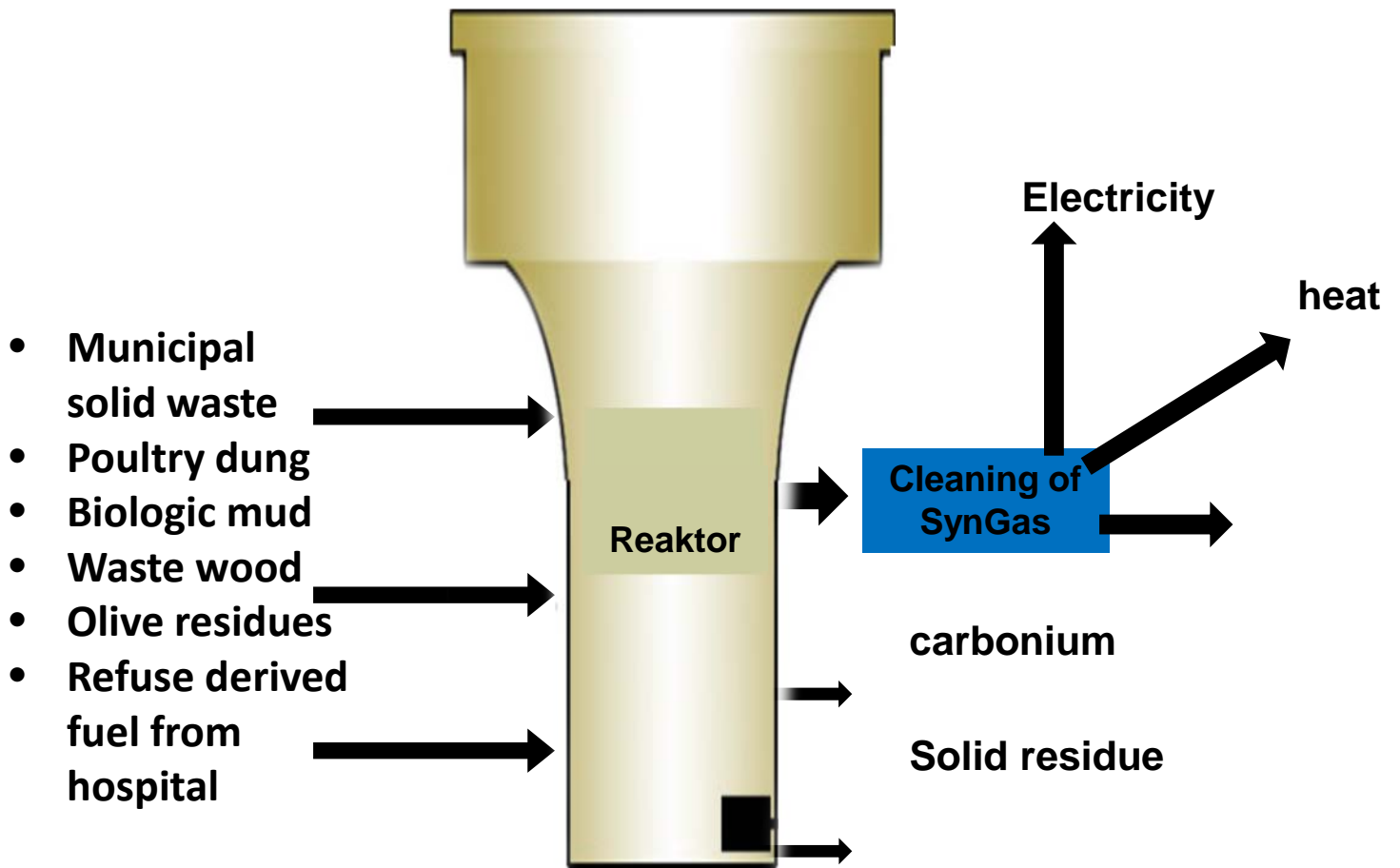
EMISSIONS

- ✘ Pyrolysis can minimize emissions.
- ✘ For illustration below data from measurement in Norway.



	EU Limit	Pyrolysis
Prach	10	0,24
Hg	0,03	0,00327
Cd+TI	0,05	0,00002
Kovy	0,5	0,00256
CO	50	2
HF	1	0,02
HCl	10	3,6
TOC	10	0,2
NOx	200	42
NH3	10	0,3
SO2	50	19,8
Dioxiny	0,1	0,001

ATT



ATT



System of modules



1 MW modul



1 MW modul



Instalation 4 MW



4 MW modul



Modul system

CHIPS



BEFORE GRINDING



WOOD WASTE



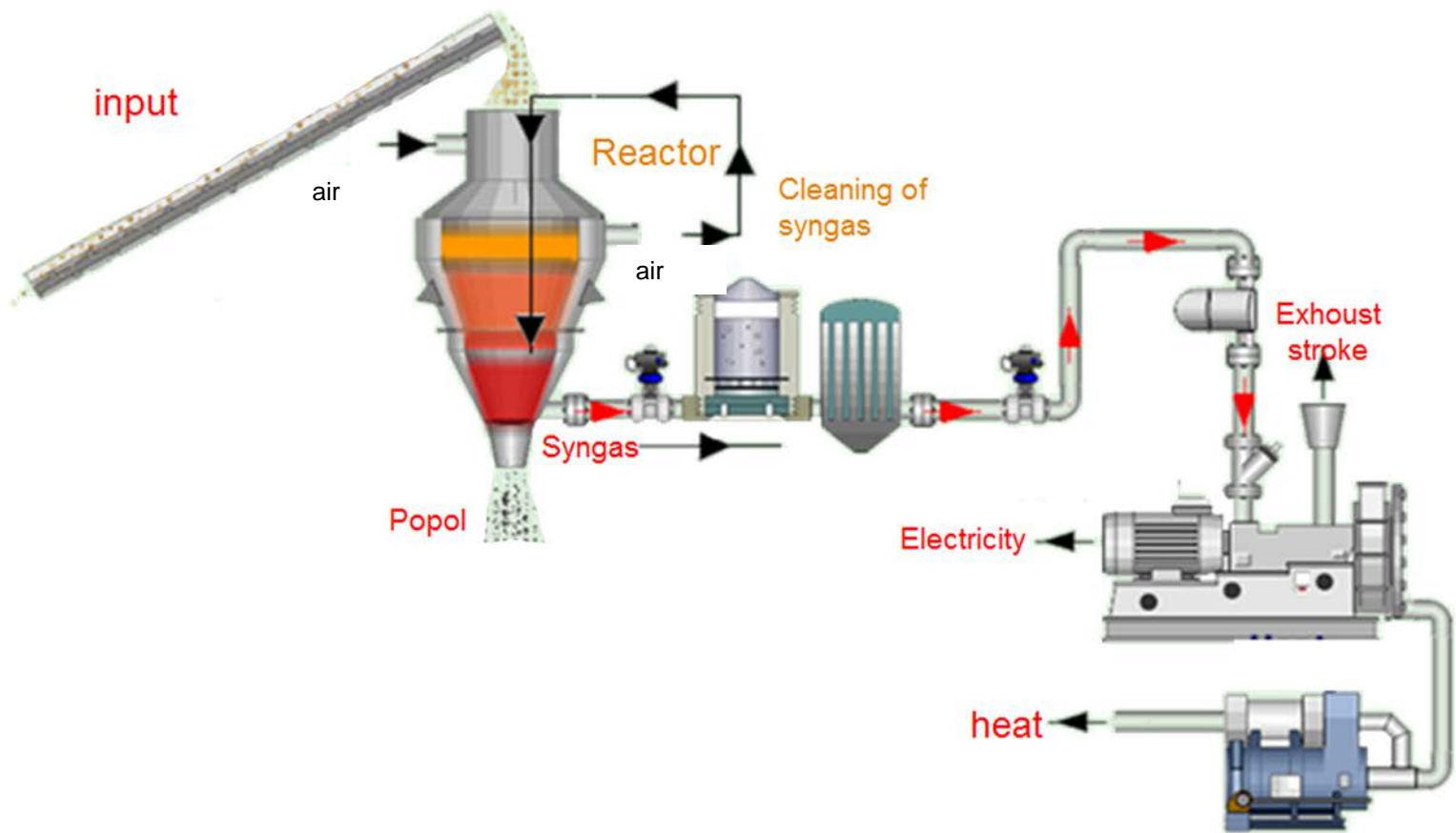
EASY TO TRANSPORT



HOUSEHOLD WASTE



System of modules





We offer turn key solution. All instalation works will be done by local companies or people headed by our experts.